



Company \_\_\_\_\_

Phone# \_\_\_\_\_

Address \_\_\_\_\_

Fax# \_\_\_\_\_

City \_\_\_\_\_ State \_\_\_\_\_ Zip \_\_\_\_\_

Date \_\_\_\_/\_\_\_\_/\_\_\_\_

Job / P.O.# \_\_\_\_\_

### Tub Wall Kit Order Form

Color: \_\_\_\_\_

Gloss

Matte

Choose Tub Size: (Tub Not Included)

60x30

60x32

Choose Wall Height:

60 High Item # 603060

60 High Item # 603260

72 High Item # 603072

72 High Item # 603272

Custom Height \_\_\_\_\_

Custom Height \_\_\_\_\_

Soap Dish Style: If none, please specify "none" here: \_\_\_\_\_

Single Recessed Soap/Shampoo

Double Recessed Soap/Shampoo

Corner Soap/Shampoo

Corner Shelves (2)

Family Recessed Soap/Shampoo (added charge)

Arched Recessed Soap/Shampoo (added charge)

Configuration Options:

Oversized Option

2 Piece Back Wall Option

Easy Fit Option

1 pc back wall @ 60" wide

2 pcs back wall @ 29.5" wide

1 pc back wall @ 58.5" wide

2 pcs @ 30" or 32" per tub size

1 pcs batten strip for back wall @ 3"

2 pcs @ 29 or 31" per tub

2 pcs corner trim

2 pcs @ 29 or 31" per tub size

2 pcs corner trim

Soap Dish, selected above

2 pcs corner trim

Soap Dish, selected above

Soap Dish, selected above

Installation Kit Option: (Added Charge Applies) Includes 7 tubes of silicone adhesive and 1 tube of translucent white finish silicone for joints)  Yes  No

Crate Option: (Added Charge Applies) When no crate is chosen, panels are shipped loose with plastic wrap only.  Yes  No



Company \_\_\_\_\_

Phone# \_\_\_\_\_

Address \_\_\_\_\_

Fax# \_\_\_\_\_

City \_\_\_\_\_ State \_\_\_\_\_ Zip \_\_\_\_\_

Date \_\_\_\_/\_\_\_\_/\_\_\_\_

Job / P.O.# \_\_\_\_\_

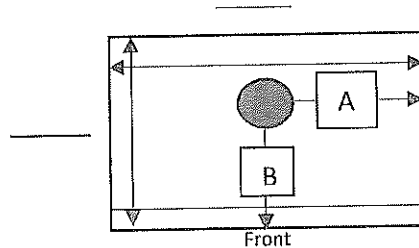
### Mix & Match Shower Kit Order Form

Color: \_\_\_\_\_

Gloss

Matte

Choose Shower Base Size and Drain Location:

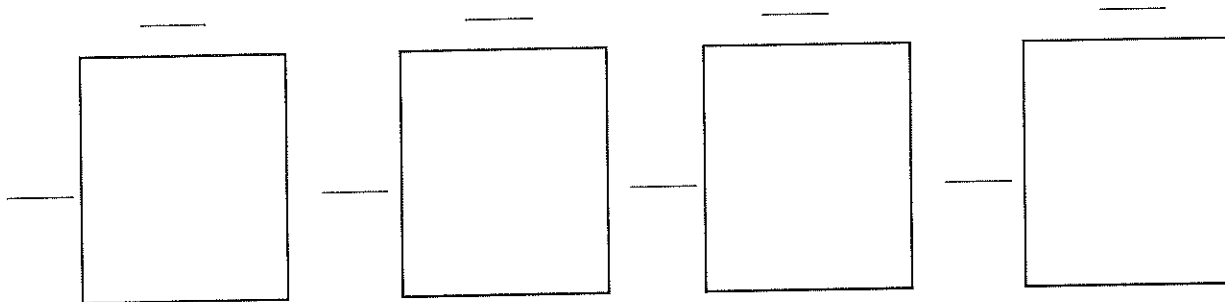


Dimension A: \_\_\_\_\_ \*\*\*

Dimension B: \_\_\_\_\_ \*\*\*

\*\*\*Some Limitations may apply.

Choose Wall Dimensions: (Panels for this base will extend to the floor of the base and will need to be notched around threshold).



\*\*\*Please specify Finished Ends with "F" and Unfinished Ends with "U"\*\*\*

Soap Dish Style: If none, please specify "none" here: \_\_\_\_\_

Single Recessed Soap/Shampoo

Double Recessed Soap/Shampoo

Corner Soap/Shampoo

Corner Shelves (2)

Family Recessed Soap/Shampoo (added charge)

Arched Recessed Soap/Shampoo (added charge)

Configuration Options:

Oversized Option (same sizes as rough opening)

Easy Fit Option (Downsized)

Include Corner Trim

Installation Kit Option: (Added Charge Applies) Includes 1 tube per 1,000 sq. in. of walls for silicone adhesive and 1 tube of translucent white finish silicone for joints)  Yes  No

Crate Option: (Added Charge Applies) When no crate is chosen, panels are shipped loose with plastic wrap only.  Yes  No



Company \_\_\_\_\_

Phone# \_\_\_\_\_

Address \_\_\_\_\_

Fax# \_\_\_\_\_

City \_\_\_\_\_ State \_\_\_\_\_ Zip \_\_\_\_\_

Date \_\_\_\_/\_\_\_\_/\_\_\_\_

Job / P.O.# \_\_\_\_\_

### 32 x 32 Shower Kit Order Form

Color: \_\_\_\_\_  Gloss  Matte

Shower Base is 32x32, single threshold with center drain, see specification sheet. Custom drain location available for additional charge, use mix & match order form.

Choose Wall Height:

72" High Item # 323272

84" High Item # 323284

96" High Item # 323296

Custom Height \_\_\_\_\_

Soap Dish Style: If none, please specify "none" here: \_\_\_\_\_

Single Recessed Soap/Shampoo

Double Recessed Soap/Shampoo

Corner Soap/Shampoo

Corner Shelves (2)

Family Recessed Soap/Shampoo (added charge)

Arched Recessed Soap/Shampoo (added charge)

Configuration Options:

Oversized Option

Easy Fit Option

3 walls at 32"

1 Back wall @ 30.5"

2 pcs of corner trim

2 Side walls @ 31"

Soap Dish, selected above

2 pcs of corner trim

Soap Dish, selected above

Installation Kit Option: (Added Charge Applies) Includes 8 tubes of silicone adhesive and 1 tube of translucent white finish silicone for joints)  Yes  No

Crate Option: (Added Charge Applies) When no crate is chosen, panels are shipped lose with plastic wrap only.  Yes  No



Company \_\_\_\_\_

Phone# \_\_\_\_\_

Address \_\_\_\_\_

Fax# \_\_\_\_\_

City \_\_\_\_\_ State \_\_\_\_\_ Zip \_\_\_\_\_

Date \_\_\_\_/\_\_\_\_/\_\_\_\_

Job / P.O.# \_\_\_\_\_

### 36 x 36 Shower Kit Order Form

Color: \_\_\_\_\_  Gloss  Matte

Shower Base is 36x36, single threshold with center drain, see specification sheet. Custom Drain Location for additional charge.

Choose Wall Height:

72" High Item # 363672

84" High Item # 363684

96" High Item # 363696

\_\_\_\_\_ Custom Height

Soap Dish Style: If none, please specify "none" here: \_\_\_\_\_

Single Recessed Soap/Shampoo

Double Recessed Soap/Shampoo

Corner Soap/Shampoo

Corner Shelves (2)

Family Recessed Soap/Shampoo (added charge)

Arched Recessed Soap/Shampoo (added charge)

Configuration Options:

Oversized Option

Easy Fit Option

3 walls at 36"

1 Back wall @ 34.5"

2 pcs of corner trim

2 Side walls @ 35"

Soap Dish, selected above

2 pcs of corner trim

Soap Dish, selected above

Installation Kit Option: (Added Charge Applies) Includes 8 tubes of silicone adhesive and 1 tube of translucent white finish silicone for joints  Yes  No

Crate Option: (Added Charge Applies) When no crate is chosen, panels are shipped loose with plastic wrap only.  Yes  No



Company \_\_\_\_\_

Phone# \_\_\_\_\_

Address \_\_\_\_\_

Fax# \_\_\_\_\_

City \_\_\_\_\_ State \_\_\_\_\_ Zip \_\_\_\_\_

Date \_\_\_\_/\_\_\_\_/\_\_\_\_

Job / P.O.# \_\_\_\_\_

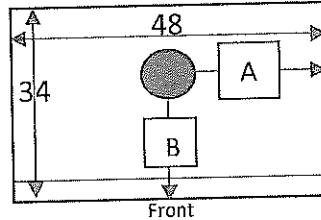
### 48 x 34 Shower Kit Order Form

Color: \_\_\_\_\_

Gloss

Matte

Choose Shower Base Drain Location:



Dimension A: \_\_\_\_\_

Dimension B: \_\_\_\_\_

Choose Wall Height: (Panels for this base will extend to the floor of the base and will need to be notched around threshold).

76" High Item # 483476

84" High Item # 483484

96" High Item # 483496

\_\_\_\_\_ Custom Height

Soap Dish Style: If none, please specify "none" here: \_\_\_\_\_

Single Recessed Soap/Shampoo

Double Recessed Soap/Shampoo

Corner Soap/Shampoo

Corner Shelves (2)

Family Recessed Soap/Shampoo (added charge)

Arched Recessed Soap/Shampoo (added charge)

#### Configuration Options:

Oversized Option

Easy Fit Option

1 Back wall @ 48"

1 Back Wall @ 46.5"

2 Side walls @ 34"

2 Side Walls @ 33"

2 pcs of corner trim

2 pcs of corner trim

Soap Dish, selected above

Soap Dish, selected above

Installation Kit Option: (Added Charge Applies) Includes 8 tubes of silicone adhesive and 1 tube of translucent white finish silicone for joints)  Yes  No

Crate Option: (Added Charge Applies) When no crate is chosen, panels are shipped loose with plastic wrap only.  Yes  No



Company \_\_\_\_\_ Phone# \_\_\_\_\_  
 Address \_\_\_\_\_ Fax# \_\_\_\_\_  
 City \_\_\_\_\_ State \_\_\_\_\_ Zip \_\_\_\_\_ Date \_\_\_\_/\_\_\_\_/\_\_\_\_  
 Job / P.O.# \_\_\_\_\_

### 48 x 36 Shower Kit Order Form

Color: \_\_\_\_\_  Gloss  Matte

Choose Shower Base: 48x36 Single Threshold, Center Drain. Custom drain location available for added charge. Suggested minimum wall height @ 76" on custom base. See specification sheet.

Choose Wall Height:

72" High Item # 483672 \_\_\_\_\_ Custom Height  
 84" High Item # 483684  
 96" High Item # 483696

Soap Dish Style: If none, please specify "none" here: \_\_\_\_\_

- Single Recessed Soap/Shampoo
- Double Recessed Soap/Shampoo
- Corner Soap/Shampoo
- Corner Shelves (2)
- Family Recessed Soap/Shampoo (added charge)
- Arched Recessed Soap/Shampoo (added charge)

Configuration Options:

- Oversized Option
  - 1 Back wall @ 48"
  - 2 Side walls @ 36"
  - 2 pcs of corner trim
  - Soap Dish, selected above
- Easy Fit Option
  - 1 Back Wall @ 46.5"
  - 2 Side Walls @ 35"
  - 2 pcs of corner trim
  - Soap Dish, selected above

Installation Kit Option: (Added Charge Applies) Includes 8 tubes of silicone adhesive and 1 tube of translucent white finish silicone for joints  Yes  No

Crate Option: (Added Charge Applies) When no crate is chosen, panels are shipped lose with plastic wrap only.  Yes  No



Company \_\_\_\_\_

Phone# \_\_\_\_\_

Address \_\_\_\_\_

Fax# \_\_\_\_\_

City \_\_\_\_\_ State \_\_\_\_\_ Zip \_\_\_\_\_

Date \_\_\_\_/\_\_\_\_/\_\_\_\_

Job / P.O.# \_\_\_\_\_

### 60 x 30 Shower Kit Order Form

Color: \_\_\_\_\_  Gloss  Matte

Choose Shower Base: Drain Location at 10.25" from either Right or Left or Center. Custom drain location available for additional charge, use Mix & Match order form.

Left  Center  Right

Choose Wall Height:

- 72" High Item # 6030L72 or 6030R72 \_\_\_\_\_ Custom Height
- 84" High Item # 6030L84 or 6030R84
- 96" High Item # 6030L96 or 6030R96

Soap Dish Style: If none, please specify "none" here: \_\_\_\_\_

- Single Recessed Soap/Shampoo  Double Recessed Soap/Shampoo
- Corner Soap/Shampoo  Corner Shelves (2)
- Family Recessed Soap/Shampoo (added charge)  Arched Recessed Soap/Shampoo (added charge)

Configuration Options:

- |   |   |  |
|---|---|--|
| <input type="checkbox"/> 3 Piece Back Wall Option | <input type="checkbox"/> Oversized Option | <input type="checkbox"/> Easy Fit Option |
| 2 pc Back Wall @ 29.25"                           | 1 Back wall @ 60"                         | 1 Back Wall @ 58.5"                      |
| 1 pc Batten @ 3"                                  | 2 Side walls @ 30"                        | 2 Side Walls @ 29"                       |
| 2 Side Walls @ 29"                                | 2 pcs of corner trim                      | 2 pcs of corner trim                     |
| 2 pcs of corner trim                              | Soap Dish, selected above                 | Soap Dish, selected above                |
| Soap Dish, selected above                         |   |  |

Installation Kit Option: (Added Charge Applies) Includes 10 tubes of silicone adhesive and 1 tube of translucent white finish silicone for joints)  Yes  No

Crate Option: (Added Charge Applies) When no crate is chosen, panels are shipped lose with plastic wrap only.  Yes  No



Company \_\_\_\_\_

Phone# \_\_\_\_\_

Address \_\_\_\_\_

Fax# \_\_\_\_\_

City \_\_\_\_\_ State \_\_\_\_\_ Zip \_\_\_\_\_

Date \_\_\_\_/\_\_\_\_/\_\_\_\_

Job / P.O.# \_\_\_\_\_

### 60 x 32 Shower Kit Order Form

Color: \_\_\_\_\_  Gloss  Matte

Choose Shower Base: Drain Location at 10.25" from either Right or Left. (Custom Base is available but must use Mix & Match Order Form)

Left  Right

Choose Wall Height:

- 72" High Item # 6032L72 or 6032R72 \_\_\_\_\_ Custom Height
- 84" High Item # 6032L84 or 6032R84
- 96" High Item # 6032L96 or 6032R96

Soap Dish Style: If none, please specify "none" here: \_\_\_\_\_

- Single Recessed Soap/Shampoo
- Double Recessed Soap/Shampoo
- Corner Soap/Shampoo
- Corner Shelves (2)
- Family Recessed Soap/Shampoo (added charge)
- Arched Recessed Soap/Shampoo (added charge)

Configuration Options:

- |   |   |  |
|---|---|--|
| <input type="checkbox"/> 3 Piece Back Wall Option | <input type="checkbox"/> Oversized Option | <input type="checkbox"/> Easy Fit Option |
| 2 pc Back Wall @ 29.25"                           | 1 Back wall @ 60"                         | 1 Back Wall @ 58.5"                      |
| 1 pc Batten @ 3"                                  | 2 Side walls @ 32"                        | 2 Side Walls @ 31"                       |
| 2 Side Walls @ 31"                                | 2 pcs of corner trim                      | 2 pcs of corner trim                     |
| 2 pcs of corner trim                              | Soap Dish, selected above                 | Soap Dish, selected above                |
| Soap Dish, selected above                         |   |  |

Installation Kit Option: (Added Charge Applies) Includes 10 tubes of silicone adhesive and 1 tube of translucent white finish silicone for joints)  Yes  No

Crate Option: (Added Charge Applies) When no crate is chosen, panels are shipped lose with plastic wrap only.  Yes  No





Company \_\_\_\_\_

Phone# \_\_\_\_\_

Address \_\_\_\_\_

Fax# \_\_\_\_\_

City \_\_\_\_\_ State \_\_\_\_\_ Zip \_\_\_\_\_

Date \_\_\_\_/\_\_\_\_/\_\_\_\_

Job / P.O.# \_\_\_\_\_

### 60 x 32 with 12" Bench Shower Kit Order Form

Color: \_\_\_\_\_

Gloss

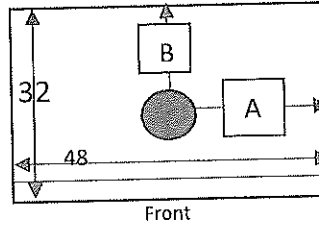
Matte

Choose Shower Base Drain Location:

(Bench will be framed 12"

to the left or right of the base done by

Contractor)



(to center of drain)

Dimension A: \_\_\_\_\_

Dimension B: \_\_\_\_\_

Choose Wall Height: (Panels for this base will extend to the floor of the base and will need to be notched around threshold).

76" High Item # 6032BCH76

84" High Item # 6032BCH84

96" High Item # 6032BCH96

\_\_\_\_\_ Custom Height

Soap Dish Style: If none, please specify "none" here: \_\_\_\_\_

Single Recessed Soap/Shampoo

Double Recessed Soap/Shampoo

Corner Soap/Shampoo

Corner Shelves (2)

Family Recessed Soap/Shampoo (added charge)

Arched Recessed Soap/Shampoo (added charge)

Configuration Options:

Oversized Option

3 Piece Back Wall Option

1 Back wall @ 60" Bench Side Wall @ 33"

2 Back Walls @ 30" 1 Batten @ 3"

1 Side wall @ 32" 2 pcs of corner trim

1 Side Wall @ 31" Bench Side Wall @ 33"

Bench Outside Face @ 20x13

Bench Outside Face @ 20x13

Bench Top @ 13x33

Bench Top @ 13x33

Soap Dish, selected above

2 pcs of corner trim Soap Dish Selected Above

Installation Kit Option: (Added Charge Applies) Includes 11 tubes of silicone adhesive and 1 tube of translucent white finish silicone for joints)  Yes  No

Crate Option: (Added Charge Applies) When no crate is chosen, panels are shipped lose with plastic wrap only.  Yes  No



Company \_\_\_\_\_

Phone# \_\_\_\_\_

Address \_\_\_\_\_

Fax# \_\_\_\_\_

City \_\_\_\_\_ State \_\_\_\_\_ Zip \_\_\_\_\_

Date \_\_\_\_/\_\_\_\_/\_\_\_\_

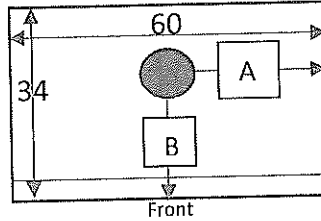
Job / P.O.# \_\_\_\_\_

### 60 x 34 Shower Kit Order Form

Color: \_\_\_\_\_

Gloss       Matte

Choose Shower Base Drain Location:



\*\*Dimension A: \_\_\_\_\_ \*\*Min of 13" from either side\*\*

Dimension B: \_\_\_\_\_

Choose Wall Height: (Panels for this base will extend to the floor of the base and will need to be notched around threshold).

76" High Item # 603476

84" High Item # 603484

96" High Item # 603496

\_\_\_\_\_ Custom Height

Soap Dish Style: If none, please specify "none" here: \_\_\_\_\_

Single Recessed Soap/Shampoo

Double Recessed Soap/Shampoo

Corner Soap/Shampoo

Corner Shelves (2)

Family Recessed Soap/Shampoo (added charge)

Arched Recessed Soap/Shampoo (added charge)

#### Configuration Options:

Oversized Option

3 Piece Back Wall

Easy Fit Option

1 Back wall @ 60"

2 Back wall pcs @ 29.25"

1 Back Wall @ 58.5"

2 Side walls @ 34"

1 Batten @ 3"

2 Side Walls @ 33"

2 pcs of corner trim

2 Side Walls @ 33"

2 pcs of corner trim

Soap Dish, selected above

2 pcs of corner trim

Soap Dish, selected above

Soap Dish, selected above

Installation Kit Option: (Added Charge Applies) Includes 10 tubes of silicone adhesive and 1 tube of translucent white finish silicone for joints)  Yes  No

Crate Option: (Added Charge Applies) When no crate is chosen, panels are shipped lose with plastic wrap only.  Yes  No

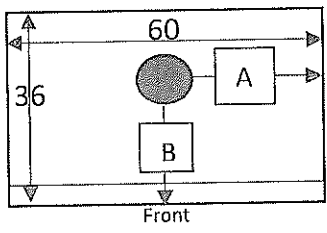


Company \_\_\_\_\_ Phone# \_\_\_\_\_  
 Address \_\_\_\_\_ Fax# \_\_\_\_\_  
 City \_\_\_\_\_ State \_\_\_\_\_ Zip \_\_\_\_\_ Date \_\_\_\_/\_\_\_\_/\_\_\_\_  
 Job / P.O.# \_\_\_\_\_

### 60 x 36 Shower Kit Order Form

Color: \_\_\_\_\_  Gloss  Matte

Choose Shower Base Drain Location:



Dimension A: \_\_\_\_\_  
 Dimension B: \_\_\_\_\_

Choose Wall Height: (Panels for this base will extend to the floor of the base and will need to be notched around threshold).

- 76" High Item # 603676
- 84" High Item # 603684
- 96" High Item # 603696
- \_\_\_\_\_ Custom Height

Soap Dish Style: If none, please specify "none" here: \_\_\_\_\_

- Single Recessed Soap/Shampoo
- Double Recessed Soap/Shampoo
- Corner Soap/Shampoo
- Corner Shelves (2)
- Family Recessed Soap/Shampoo (added charge)
- Arched Recessed Soap/Shampoo (added charge)

**Configuration Options:**

- Oversized Option
  - 1 Back wall @ 60"
  - 2 Side walls @ 36"
  - 2 pcs of corner trim
  - Soap Dish, selected above
- Easy Fit Option
  - 1 Back Wall @ 58"
  - 2 Side Walls @ 35"
  - 2 pcs of corner trim
  - Soap Dish, selected above

Installation Kit Option: (Added Charge Applies) Includes 8 tubes of silicone adhesive and 1 tube of translucent white finish silicone for joints)  Yes  No

Crate Option: (Added Charge Applies) When no crate is chosen, panels are shipped lose with plastic wrap only.  Yes  No



Company \_\_\_\_\_

Phone# \_\_\_\_\_

Address \_\_\_\_\_

Fax# \_\_\_\_\_

City \_\_\_\_\_ State \_\_\_\_\_ Zip \_\_\_\_\_

Date \_\_\_\_/\_\_\_\_/\_\_\_\_

Job / P.O.# \_\_\_\_\_

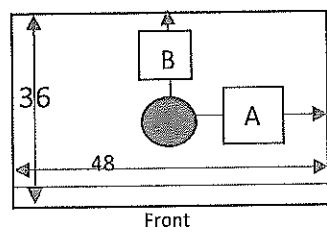
### 60 x 36 with 12" Bench Shower Kit Order Form

Color: \_\_\_\_\_

Gloss       Matte

Choose Shower Base Drain Location:

(Bench will be framed 12"  
to the left or right of the base done by  
Contractor)



(to center of drain)

Dimension A: \_\_\_\_\_

Dimension B: \_\_\_\_\_

Choose Wall Height: (Panels for this base will extend to the floor of the base and will need to be notched around threshold).

76" High    Item # 6036BCH76

84" High    Item # 6036BCH84

96" High    Item # 6036BCH96

\_\_\_\_\_ Custom Height

Soap Dish Style: If none, please specify "none" here: \_\_\_\_\_

Single Recessed Soap/Shampoo

Double Recessed Soap/Shampoo

Corner Soap/Shampoo

Corner Shelves (2)

Family Recessed Soap/Shampoo (added charge)

Arched Recessed Soap/Shampoo (added charge)

#### Configuration Options:

Oversized Option

3 Piece Back Wall Option

1 Back wall @ 60"    Bench Side Wall @ 37"

2 Back Walls @ 30"    1 Batten @ 3"

1 Side wall @ 36"    2 pcs of corner trim

1 Side Wall @ 35"    Bench Side Wall @ 37"

Bench Outside Face @ 20x13

Bench Outside Face @ 20x13

Bench Top @ 13x37

Bench Top @ 13x37

Soap Dish, selected above

2 pcs of corner trim    Soap Dish Selected Above

Installation Kit Option: (Added Charge Applies) Includes 11 tubes of silicone adhesive and 1 tube of translucent white finish silicone for joints)     Yes       No

Crate Option: (Added Charge Applies) When no crate is chosen, panels are shipped lose with plastic wrap only.       Yes       No



Company \_\_\_\_\_

Phone# \_\_\_\_\_

Address \_\_\_\_\_

Fax# \_\_\_\_\_

City \_\_\_\_\_ State \_\_\_\_\_ Zip \_\_\_\_\_

Date \_\_\_\_/\_\_\_\_/\_\_\_\_

Job / P.O.# \_\_\_\_\_

### 36" Neo Shower Kit Order Form

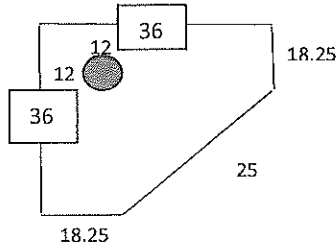
Color: \_\_\_\_\_

Gloss

Matte

Drain Location is 12" from each wall.

(Custom neo available  
by quote)



Choose Wall Height:

72" High Item # 36Neo72

84" High Item # 36Neo84

96" High Item # 36Neo96

\_\_\_\_\_ Custom Height

Soap Dish Style: If none, please specify "none" here: \_\_\_\_\_

Single Recessed Soap/Shampoo

Double Recessed Soap/Shampoo

Corner Soap/Shampoo

Corner Shelves (2)

Family Recessed Soap/Shampoo (added charge)

Arched Recessed Soap/Shampoo (added charge)

Configuration Options:

Oversized Option

Easy Fit Option

2 Walls @ 36"

1 Side Wall @ 35.5"

1 pc of corner trim

1 Side Wall @ 35"

Soap Dish, selected above

1 pc of corner trim

Soap Dish, selected above

Installation Kit Option: (Added Charge Applies) Includes 6 tubes of silicone adhesive and 1 tube of translucent white finish silicone for joints)  Yes  No

Crate Option: (Added Charge Applies) When no crate is chosen, panels are shipped lose with plastic wrap only.  Yes  No



Company \_\_\_\_\_

Phone# \_\_\_\_\_

Address \_\_\_\_\_

Fax# \_\_\_\_\_

City \_\_\_\_\_ State \_\_\_\_\_ Zip \_\_\_\_\_

Date \_\_\_\_/\_\_\_\_/\_\_\_\_

Job / P.O.# \_\_\_\_\_

### 38" Neo Shower Kit Order Form

Color: \_\_\_\_\_

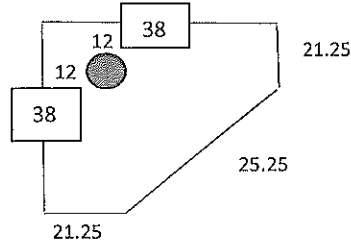
Gloss

Matte

Drain Location is 12" from each wall.

(Custom Neo base if available

By quote).



Choose Wall Height:

72" High Item # 38Neo72

84" High Item # 38Neo84

96" High Item # 38Neo96

\_\_\_\_\_ Custom Height

Soap Dish Style: If none, please specify "none" here: \_\_\_\_\_

Single Recessed Soap/Shampoo

Double Recessed Soap/Shampoo

Corner Soap/Shampoo

Corner Shelves (2)

Family Recessed Soap/Shampoo (added charge)

Arched Recessed Soap/Shampoo (added charge)

Configuration Options:

Oversized Option

Easy Fit Option

2 Walls @ 38"

1 Side Wall @ 37.5"

1 pc of corner trim

1 Side Wall @ 37"

Soap Dish, selected above

1 pc of corner trim

Soap Dish, selected above

Installation Kit Option: (Added Charge Applies) Includes 6 tubes of silicone adhesive and 1 tube of translucent white finish silicone for joints)  Yes  No

Crate Option: (Added Charge Applies) When no crate is chosen, panels are shipped lose with plastic wrap only.  Yes  No